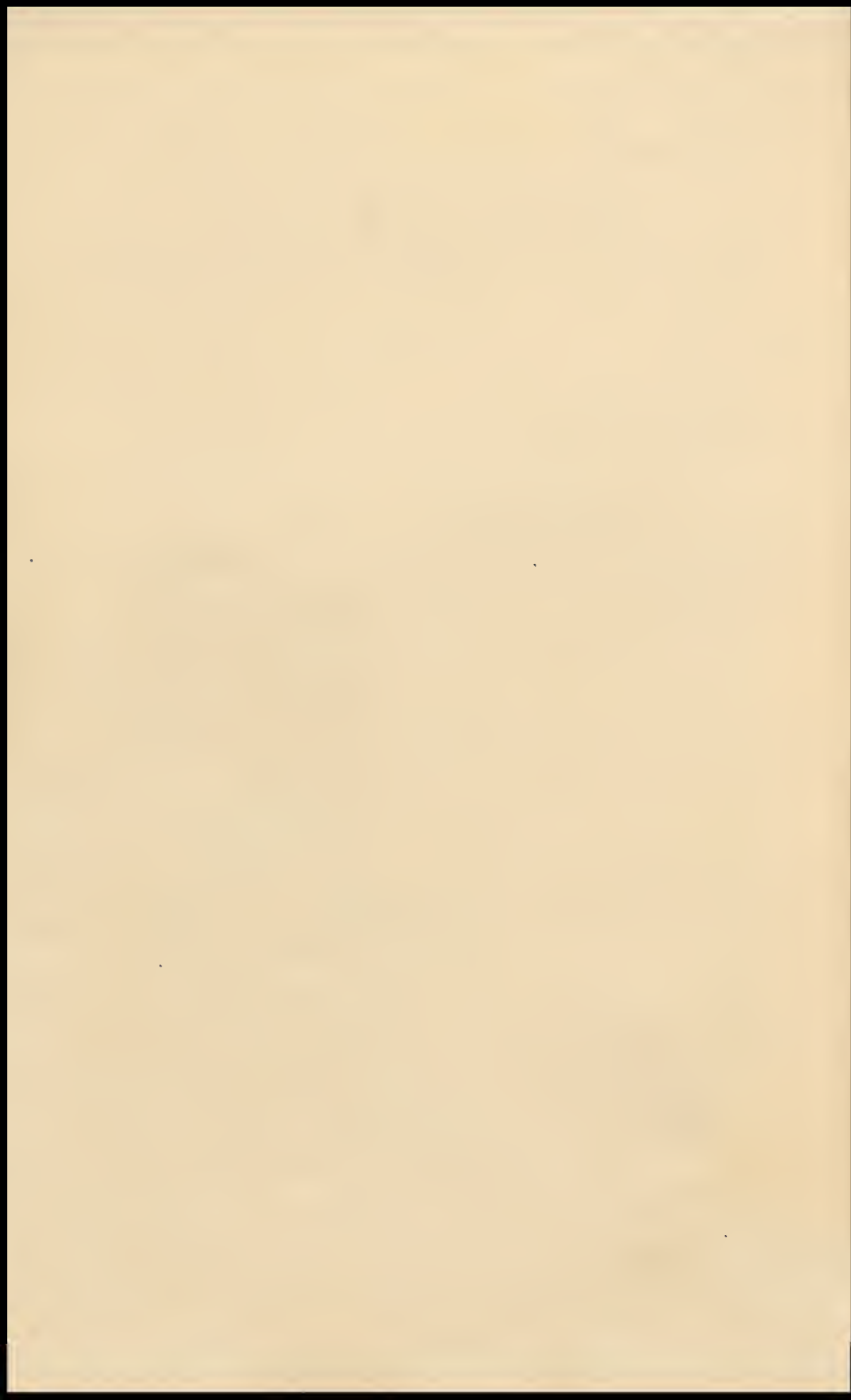






EX LIBRIS





THE  
TIGER  
Kathryn Kendall

Best luck in everything -  
(bridge with "in-laws" included)

Love,  
Mary Ann Wheeler.

All the luck  
in the world  
to you (and  
Mr. George!)  
You have  
been a perfect  
exchange editor

Sincerely  
Jackie Butler

Best of Luck  
after you get  
out of this  
(spring)  
get to go  
(of course)  
Hope you  
to Illinois

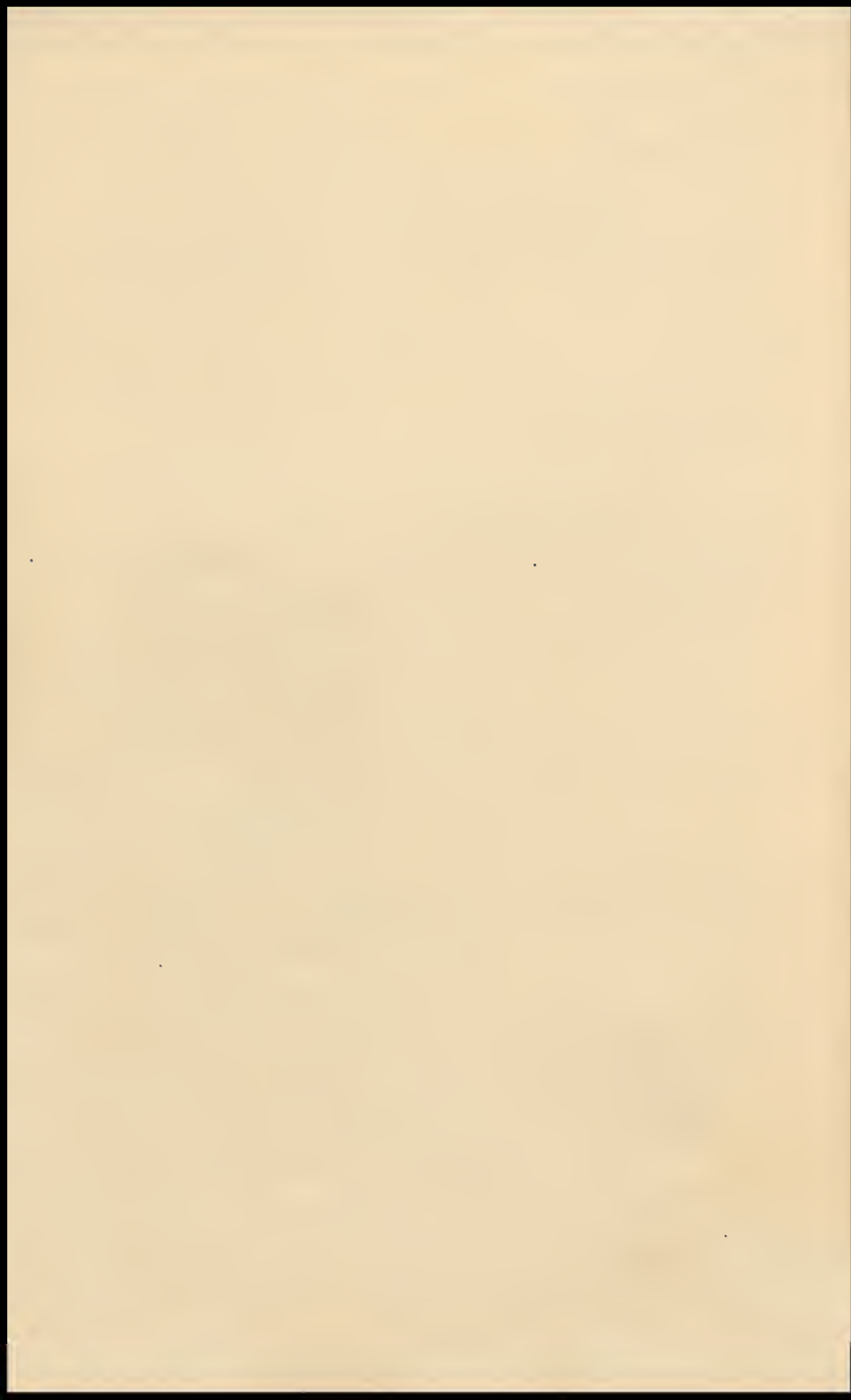
Published by

THE CLASS OF JANUARY 1932

of the

LEWIS & CLARK HIGH SCHOOL

Spokane, Washington



# **C O N T E N T S**

**SENIORS 11**

**ACTIVITIES 41**

**ORGANIZATIONS 59**

**ATHLETICS 85**

**CLASSES 95**



**HENRY M. HART**  
PRINCIPAL

---

---



---

---

January 1, 1932

To the Class of January, 1932:

I cannot recount the many incidents in the life of the Class that you have written so well into the story of Lewis and Clark. They are all a part of the Old School's triumphant progress.

I have great faith that as your names are inscribed on the Alumni Roll, we shall be much richer through the graduation of so fine a group. There is nothing in the future that will prove more pleasing and encouraging to those who watch you than the thrill that must always come with the news of your happiness and success.

Henry M. Hunt

---

---



## EDITORIAL, ART, AND

JOHN AUSTIN  
*Editor-in-Chief*

HESPRUES HOYE  
*Associate Editor*

CHARLES AIREY  
*Assistant Art Editor*

JACK HOUSTON  
*Associate Editor*

ROBERT ENGARD  
*Art Editor*

IDA JONES  
*Assistant Art Editor*



## B U S I N E S S   S T A F F S

BEATRICE KULP  
*Assistant Art Editor*

JACK RIEGEL  
*Business Manager*

HILMAR EVANSON  
*Office Manager*

MIRIAM WARNICK  
*Assistant Art Editor*

MONTE BARNES  
*Assistant Business Manager*

KATHARINE JONES  
*Advertising Solicitor*



I am glad to meet  
you & the staff  
together, and in history  
class  
I am glad to see you all  
again & to say

H. Thompson knows  
you and I like you both.  
Sincerely  
Mark Thompson



SENIORS

the 1990s, the number of people in the world who are under 15 years of age has increased from 1.1 billion to 1.5 billion. The number of people aged 15 years and over has increased from 3.5 billion to 4.5 billion. The number of people aged 65 years and over has increased from 0.5 billion to 0.7 billion.

These figures show that the world population is growing rapidly, and that the number of people in the world who are under 15 years of age is increasing. This is a significant trend, as it indicates that the world is becoming more youthful. This has implications for the world's economy, as a younger population is more likely to be employed and to contribute to the economy. It also has implications for the world's environment, as a younger population is more likely to be environmentally conscious.

The world's population is also becoming more diverse. This is due to a number of factors, including migration and the increasing number of people who are living in urban areas. This diversity has implications for the world's culture, as it leads to a greater mix of different cultures and traditions. It also has implications for the world's economy, as a more diverse population is more likely to be innovative and to contribute to the economy.

The world's population is also becoming more educated. This is due to a number of factors, including the increasing number of people who are attending school and the increasing number of people who are working in the service sector. This education has implications for the world's economy, as a more educated population is more likely to be employed and to contribute to the economy. It also has implications for the world's environment, as a more educated population is more likely to be environmentally conscious.

The world's population is also becoming more mobile. This is due to a number of factors, including the increasing number of people who are traveling and the increasing number of people who are working in the service sector. This mobility has implications for the world's economy, as a more mobile population is more likely to be employed and to contribute to the economy. It also has implications for the world's environment, as a more mobile population is more likely to be environmentally conscious.

The world's population is also becoming more health-conscious. This is due to a number of factors, including the increasing number of people who are exercising and the increasing number of people who are eating healthy food. This health-consciousness has implications for the world's economy, as a more health-conscious population is more likely to be employed and to contribute to the economy. It also has implications for the world's environment, as a more health-conscious population is more likely to be environmentally conscious.

The world's population is also becoming more environmentally conscious. This is due to a number of factors, including the increasing number of people who are recycling and the increasing number of people who are using public transport. This environmental consciousness has implications for the world's economy, as a more environmentally conscious population is more likely to be employed and to contribute to the economy. It also has implications for the world's environment, as a more environmentally conscious population is more likely to be environmentally conscious.

The world's population is also becoming more socially conscious. This is due to a number of factors, including the increasing number of people who are volunteering and the increasing number of people who are supporting social causes. This social consciousness has implications for the world's economy, as a more socially conscious population is more likely to be employed and to contribute to the economy. It also has implications for the world's environment, as a more socially conscious population is more likely to be environmentally conscious.

The world's population is also becoming more technologically conscious. This is due to a number of factors, including the increasing number of people who are using the internet and the increasing number of people who are working in the technology sector. This technological consciousness has implications for the world's economy, as a more technologically conscious population is more likely to be employed and to contribute to the economy. It also has implications for the world's environment, as a more technologically conscious population is more likely to be environmentally conscious.



## SENIOR OFFICERS

BLISS MOORE  
*President*

MARSHALL FRANCIS  
*Treasurer*

JACK HOUSTON  
*Fifth Executive*

SMITHMOORE MYERS  
*Vice-President*

LEE NICHOLSON  
*Secretary*





**THOMAS TEAKLE**

SENIOR A ADVISOR



---

---

Leaving high school  
today in the presence of a  
widespread conviction that  
world forces are in mal-ad-  
justment you, doubtless,  
face the greatest opportu-  
nity ever afforded young  
people of your station.  
May you be properly  
ready to meet whatever  
demands such an occasion  
may make upon you!

L  
L  
Thos. Hall

Nov. 18, 1931

---

---



## SENIOR A CLASS

Donald Marion Adams  
Engineering  
Whitworth

Virginia Greene Aller  
Home Economics  
Washington State College

Louis Vitus August  
Law  
Gonzaga

Charles Allan Airey  
Fine Arts  
University of Washington

Hubert Callaway Armstrong  
Architecture  
Washington State College

John Churchill Austin  
Aeronautical Engineering  
Massachusetts Inst. of  
Technology

Marie Priscilla Allen  
Liberal Arts  
Washington State College

Frank Herbert Arnold  
Secretarial  
Kinman

Elizabeth Miriam Baker  
Chemistry  
University of Washington

*made a  
great  
thing for  
you  
[14]  
back to a  
road of  
the  
city  
think  
of  
you*



## JANUARY 1932

Lucile Mary Baker  
Business  
Washington State College

Raymond Charles Beauchamp  
Mining  
Washington State College

Gerald LaRue Bennett  
Electrical Engineering  
Washington State College

Wilmont Lamont Barnes  
Electrical Engineering  
Washington State College

Robert Douglas Beckwith  
Engineering  
University of Washington

Jacqueline Bertles  
Miss Porter's School

Dorothy Margaret Barr  
Secretarial  
Kinman

Samuel Edwin Beggs  
West Point

Ira John Bobo  
Kinman



## JANUARY 1932

Frederick Lavoisier Coddington  
Engineering  
University of Washington

Arthur Couture  
Aviation

John MacDougall Davis  
Business Administration  
University of Washington

Glenn Walter Colyar  
Cheney State Normal School

Marguerite Louise Croyle  
Chemistry  
University of Idaho

Rhodes Ely Day  
Electrical Engineering  
Washington State College

Homer Palmer Conrow  
Science  
University of Washington

Marjorie Mac Davidson  
Nursing  
Portland Sanitarium

Eleanor Ryerson Denham  
Business Administration  
Washington State College





## SENIOR A CLASS

June Lillian May Dibble  
Physical Education  
Washington State College

Charles Patrick Dowd  
Engineering  
Gonzaga University

Harold Henry Engstrom  
Forestry  
University of Washington

Philip Hugh Dirstine  
Chemistry  
Gonzaga University

Alice Josephine Ellingson  
Nursing  
Deaconess Hospital

Hilmar Humphries Evanson  
Business Administration  
Washington State College

James Franklin Doughty  
Aviation  
Parks Air College

Robert Oliver Engard  
Chemical Engineering  
Washington State College

Eleanor Louise Fogelquist  
Business  
Washington State College

A black and white portrait of a young man with dark, wavy hair, looking slightly to the right. He is wearing a dark suit jacket over a light-colored shirt and a dark tie. The background is a plain, light color. The photo is mounted on a dark album page.



## SENIOR A CLASS

Richard Carl Gleiforst  
Aviation

Benny Walter Hahn  
Pastry Chef

Everett Roy Hanson  
Mining Engineering  
University of Washington

David Morton Goldman  
Mechanical Engineering  
Washington State College

Constance Moore Hamblen  
General  
Pomona College

Florence Hauglum  
Liberal Arts  
Washington State College

Dorothy Marguerite Grazer  
General  
University of Washington

Harriett Jean Hancox  
Dramatics

Hilda Millicent Hawker  
Liberal Arts  
Washington State College





## JANUARY 1932

Orval Francis Hill  
Radio

Peggy Alberta Hodges  
Secretarial  
Kinman Business College

Annie Lois Hook  
Music

Kathryn Houk  
Home Economics  
Washington State College

John Albert Houston  
Liberal Arts  
Stanford University

Hesprues Mae Hoyer  
Liberal Arts  
Washington State College

Eleanor Fredericka Hupe  
Secretarial

Alfred Irwin Hytowitz  
Chemistry  
Washington State College

Paul Hebert Jacoy  
Business





## SENIOR A CLASS

Estella Mae James  
Secretarial

Grace Esther Jamme  
Secretarial

Ralph Donald Johnson  
Engineering  
Washington State College

Ida Mina Jones  
Art  
University of Washington

Katharine Elizabeth Jones  
Home Economics  
Washington State College

Herbert Eugene Kevis  
Radio Technician

Jesse Austin Kimbrough  
Forestry  
University of Idaho

John Wyman King  
Mining Engineering  
University of Arizona

Nina Lorraine Kingsriter  
Music



## JANUARY 1932

Ethel May Kirkeby  
Liberal Arts  
Washington State College

Osmo Fred Laitinen  
Business

Edward Laverne Lea  
Mining Engineering  
Oakland Polytechnic Institute

Beatrice Louise Kulp  
Art  
Washington State College

Myrtle Orena Larson  
Secretarial

John Francis Leahy  
Law  
University of Idaho

Phyllis Mary Kusterer  
Undecided

Gertrude Rose Laurance  
Cheney State Normal School

Kenneth Wesley Leendertsen  
Undecided



## SENIOR A CLASS

*"To be or not to be"*  
*Elaine*  
*Love and luck*

William Hess Littell  
General  
Washington State College

Regina Madeline Luedke  
Secretarial

Peggy Lois McDonald  
Home Economics  
Washington State College

George Francis Lovell  
Chemistry  
Washington State College

Jean MacGillivray  
Secretarial  
Washington State College

John Theodore McFadden  
Electrical Engineering  
University of Idaho

Lillian Elfie Ludwick  
Music

Louis Samuel Manheim  
Business  
Gonzaga University

Elaine Ruth McGilvery  
Dramatics



## JANUARY 1932

Richard McIntosh  
Business Administration  
Washington State College

William Merle McLaughlin  
Business

Richard Frederick Melberg  
Aeronautics  
University of Washington

Shirley Lee Modesitt  
General  
Washington State College

Lillie Louise Moe  
Dramatics  
Northwestern University

Bliss Moore, Jr.  
Chemical Engineering  
University of Washington

Carl Wallace Morig  
Electrical Engineering  
Washington State College

Marjorie Irene Mottern  
Art  
University of Washington

Robert Pierce Muffett  
Business Administration  
University of Idaho





## SENIOR A CLASS

Bernyce Mary Murphy  
Undecided

Elizabeth Vineta Nail  
Classical  
Whitman College

Dorothy Ellen Oeck  
Secretarial

Evelyn Lucille Myers  
Cheney State Normal

Barbara Anne Nash  
Art

Wayne Everett Olsen  
Science  
Washington State College

Smithmoore Paul Myers  
Law  
University of Washington

Miriam Lee Nicholson  
Law  
University of Washington

Phyllis Anne O'Neil  
Business Administration  
Washington State College



## JANUARY 1932

Ross Perry  
Engineering  
Washington State College

Joyce Adelaide Pihlstrom  
University of Minnesota

Savilla Norene Richert  
General  
Washington State College

Claude Leon Pierson  
General  
University of Idaho

Alan Morris Portuguese  
Engineering  
University of Washington

John Frank Riegel  
General  
Washington State College

Frances Louise Pihlstrom  
Business Administration  
University of Minnesota

Eileen Francys Proctor  
Telephone Operator

Betty Roadnight  
Liberal Arts  
University of Washington



## SENIOR A CLASS

Ruth Elizabeth Roberts  
Undecided

Merle Grace Robinson  
General  
University of California

Vivienne Lois Robinson  
Nursing  
University of Minnesota

Gladys Marie Rogers  
Nursing

Freda Lea Roller  
Home Economics  
Washington State College

Harry Edward Roller  
United States Coast  
Guard

Leatha Lucille Runner  
Liberal Arts  
Washington State College

Elizabeth Birdwell Russell  
Liberal Arts  
Spokane University

Evelyn Lorraine Sanderson  
Liberal Arts  
Washington State College



To Ray - an  
exceedingly  
dearly held  
We've had lots  
fun on staff &  
will have more  
when we're in  
college - write  
me? There's to  
be sent for you  
(Johnny)  
Love, Phil

## JANUARY 1932

Irene Elizabeth Sanderson  
Designing

Helen Jean Sandner  
Liberal Arts  
University of Washington

Evelyn Esther Saulsbury  
Undecided

Winnifred Blossom Scanlan  
English  
University of Washington

Charlotte Lucille Schaffer  
Secretarial  
Northwestern Business  
College

Phyllis Amelia Schedler  
Journalism  
Washington State College

Winston Henry Schleaf  
Architecture  
Washington State College

John George Schlomer  
Washington State College

Lydia Esther Schmidt  
Secretarial





## SENIOR A CLASS

Josephine Ione Schneider  
Secretarial

Jessie Margaret Scott  
Music  
Oberlin College

Thelma Sophia Severin  
Secretarial

Dale Lewis Schuster  
Engineering  
Washington State College

Catherine Cecile Seder  
Education  
University of California

Sylvia Silverstein  
Secretarial

Eva Elizabeth Schwartz  
Secretarial

Emi-Marie Seligman  
Liberal Arts  
University of Washington

Robert Emil Skindlov  
Business Administration  
University of Idaho



## JANUARY 1932

Genevieve Elsie Smith  
Secretarial

Marc Hubbard Souther  
Animal Husbandry  
University of Idaho

Hilda Lucy Spencer  
Dressmaking

Ann Ottelia Stromstead  
Secretarial

John Golden Taylor  
Liberal Arts  
University of Utah

Catherine May Thompson  
Undecided

Ruth Esther Torkelson  
General  
Washington State College

Earl James Turner  
Law  
Washington State College

Marie Elaine VanDeVanter  
Secretarial



## SENIOR A CLASS

Olive Leon von Nahmen  
Home Economics  
Washington State College

Ruth Isabel Washburn  
Secretarial

Ida Helen Weger  
Business

Lillian Bernice Walker  
Home Economics  
University of Idaho

Kermit Fuller Wasmuth  
Aeronautics  
University of Washington

William Edward Wegner  
Science  
Washington State College

Miriam Arlene Warnick  
Art  
Washington State College

Thomas George Waters  
Undecided

Aldine Lucile Westphal  
Music  
Washington State College



## JANUARY 1932

Ora Leona Whitestien  
Nursing

Robert Jay Williams  
United States Naval  
Academy

Donald William Wilson  
Forestry  
University of Idaho

Marcelle Elizabeth Young  
Secretarial  
Kinman's Business  
University





JOHN AUSTIN  
Valedictorian

SMITHMOORE MYERS  
Salutatorian

## HONOR STUDENTS

For the first time in the history of Lewis and Clark, two boys, John Austin and Smithmoore Myers, carried off the scholastic honors. Because of this unusual circumstance, it was decided that both should speak at the Commencement Exercises of the Class of January, 1932. It seemed fitting that they should take the topic of Lewis and Clark's trip to the Pacific, comparing their hardships and ultimate glorious achievements to those of the graduating class. The name of the Lewis and Clark High School will always stand for those high ideals which led Lewis and Clark themselves on to accomplishment. It is with this spirit that the Class of January, 1932, leaves the Lewis and Clark High School to carve for itself a place in the progress of civilization.



## SENIOR A LETTERS

RICHARD BOYD	JOHN DAVIS	MARSHALL FRANCIS	CONSTANCE HAMBLÉN	RALPH JOHNSON
JOHN KING	JACK LEAHY	KENNETH LEENDERTSEN	RICHARD McINTOSH	MARJORIE MOTTERN
LEE NICHOLSON	WAYNE OLSEN	ROSS PERRY	WINSTON SCHLEEF	DALE SCHÜSTER
	EARL TURNER	KERMIT WASMUTH	ROBERT WILLIAMS	



## SENIOR A CREST

LOUIS  
AUGUST  
FREDERICK  
CODDINGTON  
PHILIP  
DIRSTINE

JOHN  
AUSTIN  
GLENN  
COLYAR  
ROBERT  
ENGARD  
CONSTANCE  
HAMBLEN

EDWIN  
BEGGS  
MARJORIE  
DAVIDSON  
HILMAR  
EVANSON  
JACK  
HOUSTON

KATHLEEN  
CALKINS  
ELEANOR  
DENHAM  
MARSHALL  
FRANCIS



## SENIOR A CREST

HESPRUES  
HOYE  
SMITHMOORE  
MYERS

JOYCE  
PHILSTROM

GRACE  
JAMME  
BARBARA  
NASH

ELIZABETH  
RUSSELL  
KERMIT  
WASMUTH

LILLIAN  
LUDWICK  
LEE  
NICHOLSON

HELEN  
SANDNER  
WILLIAM  
WEGNER

LOUISE  
MOE  
ROSS  
PERRY  
CATHERINE  
SEDER





**ANN REELY**  
DRAMATIC COACH



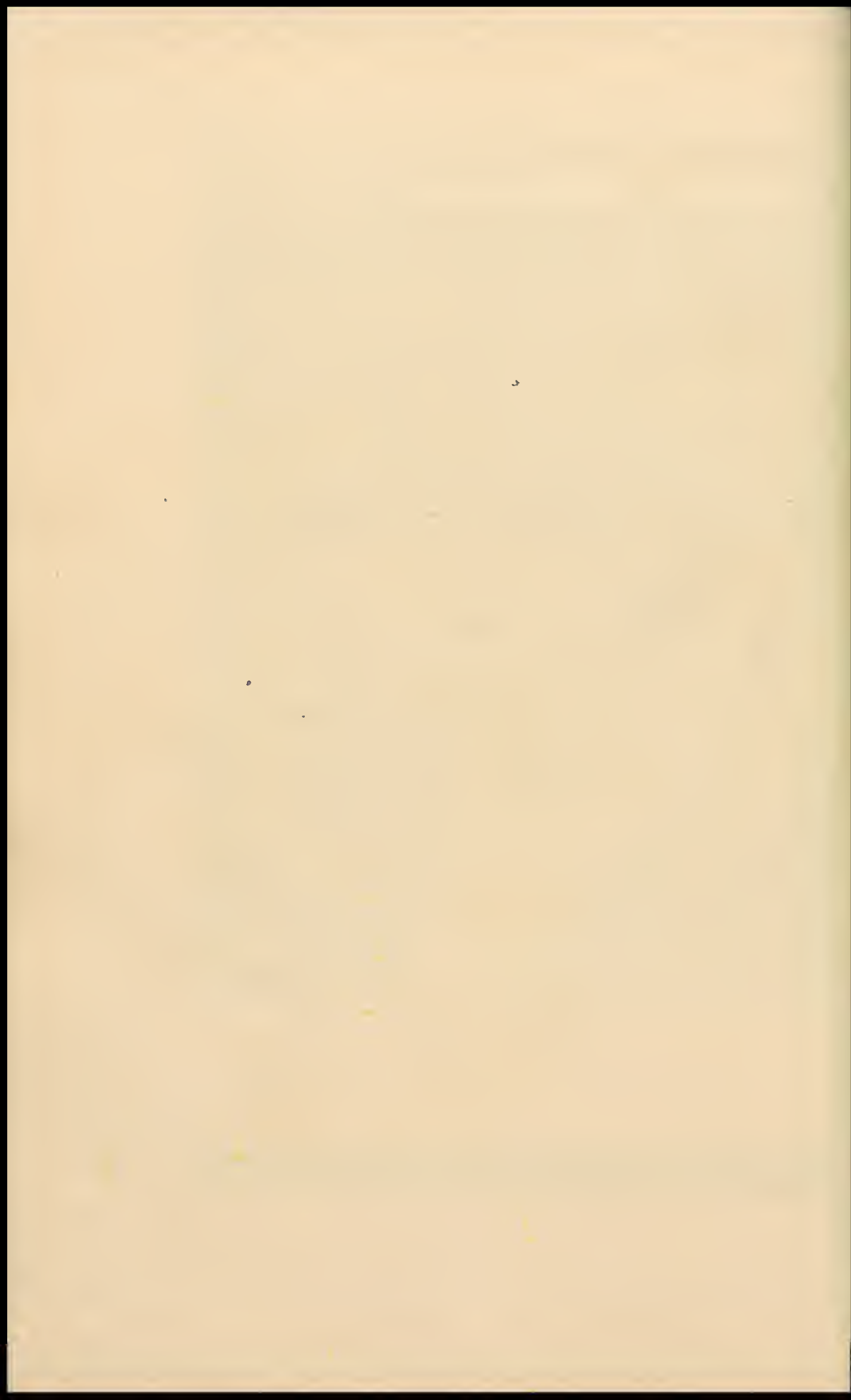
## SENIOR CLASS PLAY

The Nut Farm, a clever, hilarious comedy, has to do with the Barton family, consisting of Willie, an ambitious chap who yearns to be a film-comedy director; his married sister, Helen Bent, ambitious to become a movie star; Helen's husband, Bob; and Mrs. Barton, the patient though sorely tried mother of Willie and Helen.

Bob Bent sells a grocery store in Newark for \$30,000 and intends to buy a nut farm in California. The family moves to Hollywood where they meet Holland, a slick film producer. By the time he and his co-workers get through with the \$30,000, all Bob has left is an unhappy memory. Willie saves the day by a bit of movie magic and salvages Bob's "little old bank roll."

Romance is supplied by Willie Barton and Agatha Sliscomb. From the moment Willie first sees Agatha in the garden, he knows she is the girl for him.

The Cast included: Helen Sandner, Richard Boyd, Rhodes Day, Herbert Arnold, Ida Jones, Phyllis Schedler, Charles Airey, Otto Garcea, Louis August, Louise Moe



~~Minase war~~

I think you're  
sweet and I hope I'll  
see you again after  
I'm back here.



## ACTIVITIES

the 1990s, the number of people in the UK who are employed in the public sector has increased by 1.5 million, from 2.5 million in 1980 to 4 million in 1995. The public sector has become a major employer in the UK, and its growth has been a major factor in the overall growth of the economy.

The public sector has also become a major provider of social services, and its growth has been a major factor in the overall growth of the economy. The public sector has become a major provider of social services, and its growth has been a major factor in the overall growth of the economy.

The public sector has also become a major provider of social services, and its growth has been a major factor in the overall growth of the economy. The public sector has become a major provider of social services, and its growth has been a major factor in the overall growth of the economy.

The public sector has also become a major provider of social services, and its growth has been a major factor in the overall growth of the economy. The public sector has become a major provider of social services, and its growth has been a major factor in the overall growth of the economy.

The public sector has also become a major provider of social services, and its growth has been a major factor in the overall growth of the economy. The public sector has become a major provider of social services, and its growth has been a major factor in the overall growth of the economy.

The public sector has also become a major provider of social services, and its growth has been a major factor in the overall growth of the economy. The public sector has become a major provider of social services, and its growth has been a major factor in the overall growth of the economy.

The public sector has also become a major provider of social services, and its growth has been a major factor in the overall growth of the economy. The public sector has become a major provider of social services, and its growth has been a major factor in the overall growth of the economy.

The public sector has also become a major provider of social services, and its growth has been a major factor in the overall growth of the economy. The public sector has become a major provider of social services, and its growth has been a major factor in the overall growth of the economy.

The public sector has also become a major provider of social services, and its growth has been a major factor in the overall growth of the economy. The public sector has become a major provider of social services, and its growth has been a major factor in the overall growth of the economy.





## FACULTY HEADS

Kate Bell  
Mathematics

Clara Bond  
Home Economics

George F. Clukey  
Chemistry

Carlotta Collins  
English

Helen L. Dean  
Latin

Ruth K. Fiskien  
Fine Arts

C. S. Fredrickson  
Manual Arts

E. L. Hunter  
Boys Physical  
Education

Mary Helen McCrea  
Library

Joseph G. McMacken  
Physics

H. J. Oke  
Commercial

Marie Emma Sturrow  
Modern Language

Alonzo P. Troth  
Biological  
Science

Monda Velikanje  
Girls Physical  
Education

Daniel S. Whitman  
History



## M A T H E M A T I C S



## H O M E E C O N O M I C S



## C H E M I S T R Y





ENGLISH





FINE ARTS







**BOYS PHYSICAL EDUCATION**







PHYSICS





C O M M E R C I A L



MODERN LANGUAGE





BIOLOGICAL SCIENCE



**GIRLS PHYSICAL EDUCATION**







## SENIOR A SNAPS

DON  
FRANK

PHYLLIS  
SCHIEDLER

WINSTON  
SCHLEEF

HILDA  
HAWKER

HAROLD  
ENGSTROM

GRACE  
JAMME

CHARLES  
AIREY

ELEANOR  
DENHAM

HARRIETT  
FREEMAN

GERALD  
BENNETT  
AND BROTHIER

ILENE  
ALEXANDER

BARBARA  
DENHAM

IRENE  
ALLISON

BERNYCE  
MURPHY

DAVE  
GOLDMAN

HELEN  
SANDNER

ELEANOR  
HUPE

IRENE  
SANDERSON

CATHERINE  
THOMPSON



Best of Luck and  
Love - Kathryn and  
more fun for English  
Lovers  
Daddy DeDe



ORGANIZATIONS

*W.C. Davis*

the 1990s, the number of people in the UK who are employed in the public sector has increased by 1.5 million, from 2.5 million in 1980 to 4 million in 1995. The public sector has become a major employer in the UK, and its growth has been a major factor in the overall growth of the economy.

The public sector has also become a major provider of social services, and its growth has been a major factor in the overall growth of the economy. The public sector has become a major provider of social services, and its growth has been a major factor in the overall growth of the economy.

The public sector has also become a major provider of social services, and its growth has been a major factor in the overall growth of the economy. The public sector has become a major provider of social services, and its growth has been a major factor in the overall growth of the economy.

The public sector has also become a major provider of social services, and its growth has been a major factor in the overall growth of the economy. The public sector has become a major provider of social services, and its growth has been a major factor in the overall growth of the economy.

The public sector has also become a major provider of social services, and its growth has been a major factor in the overall growth of the economy. The public sector has become a major provider of social services, and its growth has been a major factor in the overall growth of the economy.

The public sector has also become a major provider of social services, and its growth has been a major factor in the overall growth of the economy. The public sector has become a major provider of social services, and its growth has been a major factor in the overall growth of the economy.

The public sector has also become a major provider of social services, and its growth has been a major factor in the overall growth of the economy. The public sector has become a major provider of social services, and its growth has been a major factor in the overall growth of the economy.

The public sector has also become a major provider of social services, and its growth has been a major factor in the overall growth of the economy. The public sector has become a major provider of social services, and its growth has been a major factor in the overall growth of the economy.

The public sector has also become a major provider of social services, and its growth has been a major factor in the overall growth of the economy. The public sector has become a major provider of social services, and its growth has been a major factor in the overall growth of the economy.





ROW 1—Marguerite Skoglund, Bernice Weston, Gertrude Laurance, Hazelruth Garst, Luella Holman, Frances Jones, Evelyn Sanderson, Dorothy Orwig, Mary Etta Thun, Eleanor Averitt, Kathleen Thorstensen. ROW 2—Richard Boyd, George Harris, Robert Engard, Elizabeth Helseth, Catherine Seder, Helen Vermeers, Esther Johnson, Miss Pope. ROW 3—Robert Brown, Mr. Ferrer, Wayne Olsen, Hugh Warner, Sylvanus Williamson, Glenn Wilson, Robert Muffett, James Wickwire, Kermit Wasmuth, Leslie Payne

## ADELANTE

The object of the Adelante Club is to promote a more intensive study of Spanish art, customs, history and literature that a better understanding of the races who speak it may result; a social use of the language so that its study will become more enjoyable; a greater freedom of effort in conversation than can be possible in the classroom with the thought such usage will prove a great factor in arousing and maintaining interest in the living language.



ROW 1—Bob Morlin, Bill Kopeinig, George Meyers, Orville Anderson, Burnette Chausse, Philip Dirstine, Bill Worman. ROW 2—Chester Bartholomew, Tom Cassin, Kenneth Walker, Kenneth Underhill, Walter Ehtee, Harold Engstrom, Kelsey Reed, Mr. Craig. ROW 3—Roscoe Laing, John Bliss, John Mathews, Conrad Smitt, Sam Mossuto, Jim Doughty, Bill Roth, Bill Jason. ROW 4—Ronald Hathaway, Bill Oves, Tom Bager, Carl Jasper, George Visk

## AERONAUTICAL

For several semesters, each aviation enthusiast in Lewis and Clark has hoped that some day a club would be organized through which he could associate with other boys of like interests and could receive helpful suggestions and ideas. In order to satisfy this desire, the Aeronautical Club was formed in September, 1931, under the guidance of Mr. Craig. Five committeemen were elected at that time to take care of business, such as securing speakers and arranging trips to points of aviation interest. Talks on airplane designing, and on the various types of planes and motors are given, and at a recent meeting it was decided to participate in a model building contest with the other high schools of the city.



ROW 1—Lee Nicholson, Harriet Troth, Constance Hamblen, Catherine Jennings, Janeth Hogue, Betty Ramage, Sarah Ferris, Audrey Dennis. ROW 2—Mary Ann Wheeler, Dorothy Hamblen, Marjorie Andres, Katherine Crommelin, Penelope King, Marion Towne, Harriet Butts, Katherine Crego. ROW 3—Edward Morris, Fred Gilbert, Gordon Bussard, Smithmoore Myers, Edwin Beggs, Jack Close, Erle Horswill, Donald Dirstine. ROW 4—Merton Hatch, Jerry Barker, Wesley DuBois, Miss Dean, Miss Stannard, Miss Rummer, Miss McQuiston

## CLASSICAL

The Classical Club was organized to give students an opportunity to gain a knowledge of the many fine contributions that the classics have to offer, the detailed study of which is prevented by the shortness of class periods and a restricted course of study. The programs are designed to stimulate the initiative and the originality of each individual. Dramatization of original plays and poems, and an occasional Roman banquet portraying the customs and the home life of the ancient Romans, all serve to bring to the student a deeper appreciation and knowledge not only of the classics, but also of modern problems and literature.



ROW 1—Evelyn Agostino, Mable Cory, Natalie Fayre, Loretta Moody, Permilia Murray, Mary Eleanor Wood, Mildred Shook. ROW 2—Hazelruth Garst, Mildred Allen, Bernice Swanson, Bernice Weston, Phalice Wright, Ruth Wikstrom. ROW 3—Jane Berkey, Jessie Scott, Virginia Larsen, Miss Lake, Peggy McDonald, Marie Fish, Gayl Harder. ROW 4—Josephine Ellingson, Dorothy Grazer, Evelyn Myers, VerDel Westphal

## CURIE

The Curie Club is a science club for girls. It was organized in 1924 and named in honor of Madame Curie, the co-discoverer of radium and the foremost woman scientist of the day. The purpose of the club is three-fold: to stimulate an interest and a knowledge of science as it affects everyday life; to create a wholesome attitude toward new discoveries of science; and to study parliamentary practice.





ROW 1—Robert Goodrich, Alfred Allen, Harold Erickson, Winston Schleef, Don Frank, Warren Howlett, James Morrison, Alfred Nash, Roger Phillips, Lawrence Johnson. ROW 2—Frank Symmes, Fred Boyce, George Kruse, John Weidner, John Walker, Cecil Newell, Robert Stanton, Gerald Bennett. ROW 3—Guy Gordon, Wayne Clukey, Joe Botman, Henry Sigg, Carroll Adams, Maurice Petersen, Charles House, Tom Bager, Laverne Lea, Mr. Smith. ROW 4—Robert Sundin, Sam Solem, James Plastino, Robert Vermeers, Murray Wilson, Ted McCoury, Laddie Armstrong, James Uprichard, Ernest Chamberlain, John Rusk, Dick Moore

## ENGINEERING

The Engineers Club of the Lewis and Clark High School is an organization made up of upperclass boys selected from the Manual Arts Course of the school. It is affiliated with the Associate Engineers of the city and meets monthly with the North Central Engineering Society.

The purpose of the organization is "to stimulate an interest in engineering and its associate vocations; to show a clearer connection between high school and practical subjects; and to create experiences for its members whereby upon graduation from high school they may be better able to choose their vocation." Mr. A. W. Smith is the Faculty Advisor of the Club.



ROW 1—Betty Benson, Betty Craney, Virginia Milligan, Florence Handy, Eleanor Henderson, Clarice Huston, Nell Chaney, Margaret Rawson. ROW 2—Evelyn Blanchard, Marjorie Mottern, Betsy Lanahan, Lillian Young, Marian Kurz, Ida Jones, Helene Runge. ROW 3—Robert Matthiesen, Miss Fiskien, Joe Childs, Robert Engard, David Huntlev, Leila McMillan. ROW 4—Herman Nordstrom, Charles Airey

## FINE ARTS

The Fine Arts Club is an organization daily proving its value and worth to the school through services rendered in furnishing posters and notices for the numerous school functions. Organized in 1920, under the supervision of Miss Josephine Guilbert, it has had a varied and active existence. The members of this group have spent much of their time painting stage scenery and backdrops for the Senior Class Plays from semester to semester. They have also donned false hair and grease paint when called upon to assist in the promotion of the varied interests of the school. Having intensively studied interior decoration, the club, during the past year, most effectively decorated the walls of Room 302, a project creditable in its execution to an experienced decorator.



ROW 1—Mary Lou Petty (G. A. C.), Marjorie Mottern (G. A. C.), Marykay Randall (G. A. C.), Marjorie MacGregor (G. A. C.), Marguerite McCarthy (G. A. C.), Helen Erie (G. A. C.), Preston Forcum (G. A. C.), Lee Nicholson (G. A. C.), Lorraine Chappell (G. A. C., Racquet), Marie Van De Vanter (G. A. C., Sacajawea), Mabel Jansen (G. A. C.). ROW 2—Miss Norvell, Ella Mar Symmes (Racquet), Patty Paxton (Racquet), Isabel Boone (G. A. C., Racquet), Aileen Willis (Racquet), Clarice Huston (Racquet), Violet Tonhofer (Sacajawea), Mary Morris (Sacajawea), Katharine Storaasli (G. A. C., Racquet, Sacajawea), Kathleen Thorstensen (Sacajawea, Racquet), Miss Velikanje. ROW 3—Marian Current (Racquet), Elizabeth Helseth (Racquet), Eleanor Henderson (Racquet), Mildred Fremming (G. A. C., Racquet), Constance Hamblen (G. A. C., Racquet), Gene Moe (Racquet), Maxine Arnold (Sacajawea), Esther Johnson (Racquet, Sacajawea). ROW 4—Gladys Johnson (Sacajawea), Faye Hinds (Sacajawea), Dorothy Orwig (Sacajawea), Jean Johnson (Sacajawea), Natalie Favre (Sacajawea), Annie Hook (Sacajawea), Jane Austin (Sacajawea), Doris Sampson (Sacajawea), Lanorjane Gillis (Sacajawea)

## GIRLS ATHLETICS CLUBS

The purpose of the Girls Athletic Club (G. A. C.) is the furthering of girls sports in Lewis and Clark. To be eligible to membership in this group, the girl must have received a letter in inter-school competition or for having won four small numerals in inter-class sports.

The Racquet Club aims to further interest in tennis. This sport is considered one of the greatest games existing for developing a fine physique and the best of sportsmanship among girls.

In the fall of 1921, the Sacajawea Club, a hiking club in character, was founded for the purpose of advancing an interest in outdoor activities. It is the custom of the club to take a hike at least once a month to some point of interest in the vicinity of the city.



ROW 1—Leslie Francis, Benson Shoemaker, Carl Johnson, Robert Lindberg, Louis Means.  
ROW 2—Harry Gribbohm, Norris Santen, Royal Stults, Jack Erickson. ROW 3—Mr. Guttermann,  
Donald Whalen, Ed Bennett, Clyde Day, Sam Edelstein

## JUPAU

This club is for Freshmen boys who desire to form a debating society. They realize the discipline involved in oral discussions, parliamentary procedure, and the presentation and solution of problems of self-government. For reference in regard to correct parliamentary procedure, the club uses "Robert's Rules of Order." The benefits of such training should provide a background for participation in future civic and social affairs.





ROW 1—Joy Nickerson, Marjorie Andres, Evelyn Myers, Dorothy Grazer, Louise Moe, Ruth Swan. ROW 2—Ralph Lawrence, Marguerite Skoglund, Lillian Gall, Mildred Fremming, Miss Smith, Don Jeffords. ROW 3—Fred Coddington, James Wickwire, Paul Hammond, Howard Hamacher, Richard Wolfe, Howard Dilatush

## MATHEMATICS

The Mathematics Club was originally organized by a Mr. Jerbert, then a teacher in the high school, but now an instructor in the University of Washington. At the present time, the Club has a total membership of ten boys and ten girls. The purpose of the organization is found in promoting a more extensive interest in the field of mathematics. Two contests each year are sponsored by this group—a theme on the practical application of mathematics at the midyear and a contest in solving algebraic problems near the close of the year. Two cash awards are given the successful ones in the first and a silver loving cup to the successful contestant in the second. At its semi-monthly meetings the members discuss topics of lasting or current mathematical interest.



ROW 1—Isabel Boone, Alice Lake, Elizabeth Sait, Joan Wickersham, Evelyn Sanderson.  
 ROW 2—Alice Rhodes, Helen Jean McNeel, Jane Farrell, Tom Downs, Henry Matthews, Arthur Rorberg.  
 ROW 3—Betty Banks, Mary Elizabeth Young, Hesperus Iloye, Louise Burr, Jack Close, Mr. Perring.  
 ROW 4—William Wegner, Marjorie Slater, Miss Shellman, Carl Weisman, Ralph Phelps.  
 ROW 5—Kenneth Engman, Lewis Dietrich

## PALIMPSEST

The purpose of the Palimpsest Club is to create more interest in the study of the Social Sciences and in the past history of this region. It was organized by Miss Ruth West. Mr. Perring and Miss Shellman, in the absence of Miss West, are now the associate directors. Several of the interesting projects of the organization are a trip each semester to some point of historical interest in the vicinity of Spokane, the presentation of the Yale Photo Plays, and the awarding of a cup at the close of the year to the student who has done the best in at least three years of work in the Social Sciences.

*Lots of luck  
 in your work*



ROW 1—Frances Tappan, Joan Dyar, Elizabeth Sait, Esther Young, Betty Ramage, Lucille Margardt, Virginia Bradley. ROW 2—Elizabeth Helseth, Florence Handy, Frances McKittrick, Virginia Van Winkle, Eleanor Averitt, Harriet Butts. ROW 3—Gordon Bussard, Howard Hamacher, Miss Cassill, Miss Frye. ROW 4—Jack, Robert Bartleson, Mr. Baird, John Austin, Bill Kent, John Finney

## PAPYRUS

The aim of the Papyrus Club is to stimulate interest in good literature and creative writing. Members are chosen for the ability they show in entries of prose or verse which are submitted every semester to three impartial judges. Under supervision and constructive criticism, the work of the members is continually being improved. Well known writers and critics often attend the club meetings and offer valuable suggestions. Although the student may never develop his writing in later life, he gains an appreciation of good literature and learns to differentiate between good and mediocre writing.



ROW 1—Viola Owen, Eleanor Schimanski, Ruth Torkelson, Margee Mochl, Dolores Gaulke, Alice Graupman, ROW 2—Miss Sturow, Philip Dirstine, Ruth Eggert, Margaret Thyrian, Erna Hahn, Dorothy Koss, Benny Hahn, ROW 3—Jack Breen, Richard Berg, Sam Schlosser, Bill Oves, Eugene Fischer, Allen Meisenheimer, Chester Richards

## RHEINGOLD

The Rheingold Klub, which takes its name from the old German Nibelungen Saga, was organized in February of 1930. The charter members, with the assistance of the Faculty Advisor, Miss M. E. Sturow, framed a constitution decreeing the purpose of the organization to be that of affording an opportunity to use the German language in social environment and to acquaint pupils with works of German art and literature, with the folk-lore and history of Germany, and with the customs peculiar to the German people. Every member of the group is to contribute at least one topic of educational value per semester. A part of the program is devoted to amusement. The newest entertainment feature is the "Deutsches Marionetten Theater" for which various members of the club are writing short plays in German.





ROW 1 Howard Dilatush, John King, Robert Garretson, Paul Hammond, Bill Senske, Jonathan Wright, ROW 2 Harry Woodworth, Bruce Whitehouse, Richard Lawrence, Fred Coddington, Everett Rowan, ROW 3 James Gilstrom, Mr. Anderson, Carl Morig, Stuart Blum, Carl Priess

## SCIENCE

The members of this club represent boys from the Junior and Senior classes who have taken a minimum of two years of science and who are interested in further study of this field of their regular school work. Unable to satisfy this desire in the regular class work, this club has been the result. The purpose is to go deeper into the sciences and to thus learn the why and the how of some of the things of the modern world which are not explainable without some intensive study. It is an organization that should be included within the aim of every boy taking the Scientific Course. One of the chief aims in the club's work is to be found in the taking of one or two field trips per year. At the close of each semester, a banquet is held honoring those graduating at the close of the semester.



ROW 1—Arthur Lindin, Bob Davenport, Edwin Peggs, Austin Kimbrough, John Austin, Richard McIntosh, Fred Gilbert. ROW 2—Tom Downs, Smithmoore Myers, Otto Garcea, Robert Garretson, Ned Smith, Royce Eldore, Robert Williams. ROW 3—Marvin Folsom, Arnold Barrons, Stanley Little, Clyde Doran, Arch Jenkins, Robert Ferris, Walter Petty. ROW 4—Mr. Livingston, Philip Dirstine, John Davis, Warr Winston, Marshall Francis

## SENATE

The Lewis and Clark Senate is the school's major parliamentary organization. Keen rivalry in the Senate is provided by the two parties, the Radicals and the Conservatives. Although Robert's *Rules of Order* governs the assembly, diversified activities complete a well rounded program. The Senators have three traditional outside activities—a football game between the two parties, a banquet at which alumni are present, and a stag picnic in the spring. The Senate Club in the past has obtained an enviable reputation, and its members have been leaders in every school activity.



ROW 1—Ruth Sherwood, Clara Thompson, Miss Reely, Vivian Runyon, Marjorie Harman.  
 ROW 2—Hazelruth Garst, Gladys Roberts, Drusilla Wrathier, Zoan Bryant, Elaine Studebaker,  
 Marjorie MacGregor. ROW 3—Elsie Johnson, VerDel Westphal, Helen Burgrabe, Lee Nichol-  
 son, Edna Jane Ham. ROW 4—Norman Milbank, Richard Allen, Audrey Clapp, Cecil Newell,  
 Keith Morgan

## THESPIAN

The Thespian Club is a non-social organization for the purpose of developing a spirit of active and intelligent interest in dramatics and to stimulate interest in better speech. Meetings are held twice a month. Programs consist of play readings, reports on leading playwrights, actors, and directors, and short talks on make-up, lighting and stage scenery. Membership is determined by means of trvouts before a committee of three faculty and two club members.



ROW 1—Phil Weinstein, Harvey Clark, Mr. Nogle, John Richards, John De Rosier, Phil Miller. ROW 2—Bob Banks, Bob Ferris, Kenneth Walker, Barry Merrill, Louis Weiner, Wendell Newcomb, Wallace Geraghty. ROW 3—Bob Brown, Bob Hawley, Paul Pihlstrom, Bob Miller, Al Uprichard, John Bley, Ross Perry. ROW 4—Bliss Moore, Ed Casey, Charles Muzatko, Charles Karkau, Keith Richardson

## BOYS FEDERATION

The Boys Federation is an organization including all the boys of the school. Its chief purpose is to stimulate a wholesome school spirit. While its major interest is perhaps athletics, it aims to support wholeheartedly all school activities and to co-operate with the school administration in all things pertaining to the athletic, social, and scholastic well-being of Lewis and Clark.





ROW 1—Ruth Weiss, Marguerite McCarthy, Mary Shaw, Dorothy Hamblen, Louise Burr, Peggy McDonald, Rose Levin, Helen Burggrabe, Maxine Casey, Beaulah Wheeler. ROW 2—Patsy Jackson, Eugene Taylor, Mary Ann Wheeler, Gertrude Jones, Betty McGoldrick, Helen Carlson, Alice Lake, Ruth Weed, Harriet Butts. ROW 3—Joan Wickersham, Ella Mar Symmes, Barbara Patton, Irene Priess, Zelma Myers, Patty Paxton, Marykay Randall, Nell Quimby, Maxine McAvoy, Esther Young. ROW 4—Miss Stubblefield, Kathleen Tobyn, Josephine Pospisil

## GIRLS FEDERATION

Any girl who is a student in the school automatically becomes a member of the Federation upon payment of dues of ten cents per semester.

The Federation raises money for the playfield by holding convocations of various types during the school year. It takes charge of the "Jungle Jangle" each year to arouse school spirit and put color on the field at the annual football contest between Lewis and Clark and North Central. It also gives the girls vocational advice while exercising various other activities throughout the school. The Federation colors are—Blue for Loyalty; White for Purity; Gold for Effort.

*sk. Thos  
arned  
Ludo  
Kann  
Hans*



ROW 1—Helen Rudy, Margaret Hatch, Thelma Estby, Susan Lee, Loleta Ricketts, Lucile Ricketts, Mr. Mather. ROW 2—Katherine Crosby, Marjorie Bailey, Marie Rood, June Morris, Loretta Kennedy, Dorris Moffit, Vera Hartley, Sybel Doak. ROW 3—Nina Kingsriter, Lorraine Tuttle, Ramona Reeves, Cecilia Davis, Maxine Arnold, Elizabeth Kistler, Bernice Sahr, Retha Crockett

## GIRLS GLEE

The Girls Glee Club, formed in 1923 by Mr. Mather, consists of a group of girls doing advanced choral work. Admission to the Club is gained through a vocal testing at the beginning of each semester. Members are also taken from the general chorus classes on the condition of having there done an exceptional quality of work. Public appearances at the various school functions are made during the school year.



ROW 1 Phyllis Schedler, Evelyn Stevens, Frances Cullen, Rose Atwood, Virginia Bradley.  
 ROW 2 Mr. Miller, Jeanne Kaufman, Harriette Heylman, Mary Ann Wheeler, Lucille Marquardt,  
 Pauline Moser. ROW 3—Jane Farrell, Elaine McGilvery, Jacqueline Bertles, Kathryn Kendall,  
 Margaret Johanson. ROW 4 Don Frank, Arch Jenkins, Otto Garcea Clark Dietrich

## JOURNAL STAFF

THE LEWIS AND CLARK JOURNAL, a self-supporting newspaper published every Wednesday during the school year by the students of the school, is ranked as one of the leading weekly high school newspapers throughout the country. Students may qualify as reporters after taking a one-semester course in Journalism. Staff meetings are held the first period each morning for the purpose of announcing assignments and to give the members of the staff an opportunity for questions or suggestions.

The JOURNAL sponsors the Stoddard King Chapter of the Quill and Scroll, a national society for high school journalists. The paper endeavors to live up to two ideals: (1) High school reader interest, and (2) "Accuracy always."



ROW 1—Violet Zenor, Mary Ann Wheeler, Jacqueline Bertles, Virginia Bradley. ROW 2—Phyllis Schedler, Frances Cullen, Jane Farrell, Pauline Moser, Don Frank, Mr. Miller. ROW 3—Arch Jenkins, Harriette Heylman, Evangeline Blades, Margaret Johanson, Kathryn Kendall, Lucile Marquardt, Clark Dietrich

## QUILL AND SCROLL

Quill and Scroll is an international society for encouraging and recognizing good work done by high school journalists. This is the Stoddard King Chapter.

Members must be of at least Junior standing, in the upper third of their class scholastically at the time of their election, have done superior work in some phase of journalistic or creative endeavors, be recommended by the supervisor, and approved by the national secretary treasurer.

The school's chapter endeavors to promote school participation in national contests sponsored by Quill and Scroll.





ROW 1—Morris Randall, Klemens Johnson, Joe DiCarlo, Bill Worman, Don Bennett, Frank Quaintance, Irwin Newell, Chester Bartholomew, Malcolm Johnson. ROW 2—Robert Bartleson, Elbert Anders, Wesley DuBois, Bob Dixon, Melvin McMacken, Elmer Baker, Karl Jasper, John King, Charles Campbell, Vincent Wakeley. ROW 3—Jay Jordan, Victor Caputo, Carroll Lemley, Warren Pickering, Kenneth Underhill, John Wills, Howard Hanna, Clair Lakin, Earl Wolf, Mr. McMacken

## RIFLE

Considering the disadvantage of having twenty-one new members and no returning lettermen, the Rifle Team has done well this year. They have placed twenty-ninth, twenty-sixth and thirtieth in competition among fifty-three schools in the first three government matches of the year to date. The team belongs to the National Rifle Association and takes part in matches sponsored by the Association. The team also enters into telegraphic competition with other high school teams not members of this group. There are now two Expert Riflemen, one second, two third and one fifth class Sharpshooter together with one Marksman on the team. The boys shoot for these awards which are given by the National Rifle Association. Mr. J. G. McMacken is coach of the team as in former years.



## BAND

ROW 1—Clyde Eldore, Dick McIntosh, Sam Schlosser, John Davis, Irwin Hay, Harry Baldwin, William Woodmon, Carl Priess, Paul Bradley. ROW 2—Royce Eldore, Arnold Barrous, Elbert Andres, Vincent Sandahl, Harry Woodworth, William Harris, Robert Goodrich, Clarence Keck, Lausen Harvey. ROW 3—Carl Schrockel, Melvin McMacken, Robert Trezona, Jack Langeloh, Ray Cramer, Darrell White, Don Partridge, Robert Dixon, Paul Beebe. ROW 4—Warren Doolittle, Bill Denno, Edward Bland, Bruce Whitthouse, Franklin Butler, Jonathan Wright, Robert Glendinning, Richard Lawrence. ROW 5—Ben Vertrees, Philip Bender, Oscar Wilhelm, Elliott Ehrenberg, David Davis, Jack Mowery, William McConnell, George Lovell, William Wegner. ROW 6—Mr. Thomas, Director, Carlisle Goffinet, Everett Rowan, Morris Blasdel, Eugene Weidner, Robert Fisher, Robert Banks, Jack Breen, Howard Razlaff, James Donahue, Roy Stuart, SEATED—John Gay, William Hertzberg, Wayne Olsen, Everett Colyar



## ORCHESTRA

FIRST ROW—Agnes Fosket, Glenn Colyar, Constance Hamblen, Erna Hahn, Geraldine Dyer, Florence Paulin, Frances McKittrick, Lora Sherwood, Jane Berkey, Jessie Scott, William Littell, Everett Colyar. SECOND ROW—Winnifred Scanlan, Clara Silverstein, Elinor Dicht, Ann Stroniscad, Donald Stewart, Frank Quintance, Wanda Champion, Ada Elton, Genevieve Porter, Marie Hicks, Ruth Sherwood, Janet Campbell. THIRD ROW—Genevieve Jordan, Margaret Clay, Marcelle Young, Miyoko Yoshida, Roberta Hudgett, Ari Numata, Arlene Schomer, Evelyn Myers, Claribel Conner, Roy Kirby, Doris Brandvold. FOURTH ROW—Pauline Botman, Elmer Baker, Harry Castino, Paul Gustafson, John Linchan, James Clark, Janeth Hogue, Marie Schneider, Elsa Herbst. FIFTH ROW—Mildred Allen, Richard Wolfe, William Wegner, Arthur Korberg, Richard Meberg, Carl Weisman, Ted Stalnorn, Benny Hahn, Norman Vemar, Glen Miller, William Crosby, Jean Hoyt, Frank Butler. SIXTH ROW—Dunbar Tripplett, John Wheatley, Dick Lawrence, Everett Rowan, Eugene Weidner, Dick Bland, Maude Wamberg, Evangeline Blades, Royce Eldore, Richard McIntosh, John Davis, Philip Bender, Bill Woodman, Harry Baldwin.





## SENIOR SNAPS

DOROTHY  
GRAZER

JOYCE  
PHILSTROM

AUSTIN  
KIMBROUGH

EVELYN  
MEYERS

BOB  
BECKWITH

FRED  
CODDINGTON

LANORIANE  
GILLIS

PAUL  
BRADLEY

PEGGY  
HODGES

RUTH  
TORKELSON





## SENIOR SNAPS

CLAUDE  
PIERSON

SAVILLA  
RICHERT

JOHN  
AUSTIN

HESPRUES  
HOYE

BLISS  
MOORE

KATHRYN  
HOOK

MARGUERITE  
CROYLE

IDA  
JONES

EVELYN  
SANDERSON

VIRGINIA  
ALLER

MIRIAM  
WARNICK

PHIL  
DIRSTINE

LADDIE  
ARMSTRONG

BEATRICE  
KULP

ROBERT  
ENGARD











ROW 1—John Benson, Paul Pihlstrom, Jack Kennedy, Mr. Meyer. ROW 2—Robert Leendertsen, Ned Smith, Brent Guyer

## CROSS COUNTRY

The cross country squad, under the able coaching of George A. Meyer, won from North Central for the fourth consecutive year this fall by the conclusive score of 23 to 32. The meet, as in former years, was held on the Mission Street course, October 28. Six Lewis and Clark men placed among the first ten to finish and qualify for honors in the event. The victory this fall marks the sixth time Lewis and Clark has won in the preceding ten years of competition with the North Siders. The boys who placed among the first ten across the line were:

<i>Place</i>	<i>Runner</i>	<i>School</i>
1 .....	Guyer .....	L. C.
2 .....	Rich .....	N. C.
3 .....	Wassenar .....	N. C.
4 .....	Kennedy .....	L. C.
5 .....	Benson .....	L. C.
6 .....	Leendertsen .....	L. C.
7 .....	Pihlstrom .....	L. C.
8 .....	Ohland .....	N. C.
9 .....	Smith .....	L. C.
10 .....	Sparrow .....	N. C.



## FOOTBALL

KNEELING—Jack Bell, Henry Georg, Martin Hatch, Hale Foster, George Atwood, Richard Kerr, Bob Brown, Bob Banks, Sylvanus Williamson, John Bley, Joe Knight, Jack Leahy, Ed Casey, James Gilstrom, Allen Merschenheimer, STANDING—Don Miller, Eugene Oke, Howard Larson, Bill Butler, Ivan Lussier, Herb Timblin, Frederick Scherrer, Osborne Cooper, Charles Gregory, Reinhold Pearson, Bill Toney, Bob Ferris, Ernest Higgins, Les Payne, Bob Hawley, Howard Nice, John Gay, Marvin Folsom, Harold Gockley, Kermit Wasmuth, George Wolfe, Jack Pearson, Jack Murray, Herman Nordstrom, Bob Miller, Charles Karkau, Ross Perry, Russ Honsowitz, and Coach Smith.

---

---

## FOOTBALL

The Lewis and Clark grid squad opened their 1931 season a green, inexperienced team, but gradually developed into a powerful machine. Early season games were lost to Clarkston, Lewiston, and Wenatchee. The boys seemed to lack a scoring punch when they got near their opponent's goal in these games; however, a much stronger team took the



BOB BROWN



JACK LEAHY



KERMIT WASMUTH



RUSS HONSOWITZ

field against the Hillyard Panthers and held the scrappy Panthers throughout the game until, with but a few minutes left, a long pass brought a score which defeated the Tigers, 6 to 2.

On the following week, the Tigers journeyed to Walla Walla to meet one of the strongest "Blue Devil" elevens in a good many years. They were doped to lose by about 20 points



SYLVANUS WILLIAMSON



HENRY GEORG



HALE FOSTER



JOHN BLEY

but the Tigers played one of the best games of their season tying Wa-Hi 6 to 6. The next week-end, the Tigers met the Powerful Bulldogs and played a hard fighting game smearing the flashy Gonzaga backs again and again. Two bad breaks, a blocked kick that bounded back about one-third the length of the field, and a fumble, recovered by Gonzaga, back of the goal, resulted in nine points for Gonzaga. Following the Gonzaga game, the Tigers met the aggressive Yakima outfit and downed them on a sea of mud by a score of 13 to 0. The squad then began intense training under most difficult weather conditions for "The Big Game" with their North Side opponents, heavy snow and intense cold making unpleasant conditions for practice.

The day of the game dawned brightly and



BOB BANKS



REINHOLD PEARSON



GEORGE ATWOOD





JACK BELL

an enthusiastic crowd of about 7000 attended the game. The game was a thrilling encounter throughout. The 12 to 6 victory made it the first time in history of the school when the Tigers have taken two consecutive games from North Central, for they won 13 to 0 last year. Lewis and Clark scored first after North Central had marched to within ten yards of the Tiger goal. All were eagerly waiting to see if the strong Tiger line would



JACK PEARSON



ROSS PERRY



LESLIE PAYNE

hold and protect their goal. Then, quick as a flash, North Central attempted a pass, Ross Perry intercepted it and was away for a Tiger score. North Central came back a short time later, Tatman scoring on the third play after a long pass had placed the ball on Lewis and Clark's six yard line. In the last quarter, the Tigers made another drive and scored when



ED CASEY



JOE KNIGHT



DON MILLER



TED BENSON

Perry received a pass from Wasmuth in the end zones. Perry was completely covered by the North Central men. The game ended a short while later.

All city men from this year's team include: Ross Perry, John Bley, Kermit Wasmuth, Joel Knight. Those who received honorable mention were: Ed Casey, Don Miller and Russell Honsowitz.



OSBORNE COOPER



EUGENE OKE



FLOYD GUERTIN



FIRST ROW—Marion Schedler, Gene Moe, Constance Hamblen, Isabel Boone. SECOND ROW—Ella Mar Symmes, Kathleen Storaasli, Clarice Huston, Eleanor Henderson, Ari Numata. THIRD ROW—Elizabeth Helseth, Lorraine Chappell, Mildred Fremming

## GIRLS TENNIS

**A**ROUND four girls who had previously won their letters in tennis, Miss Velikanje, this semester, built a team which defeated the North Central girls 13 to 8. Every girl on the squad worked hard to win this fourth consecutive victory over the North Side rival. Two of the most spectacular matches were those of Katharine Storaasli and Mildred Fremming. Both won their matches after three hard fought sets. The double teams composed of Elizabeth Helseth and Eleanor Henderson, Ari Numata and Ella Mar Symmes were inexperienced players, but they put up a good fight. Lorraine Chappell and Clarice Huston both played a good game in this their last contest on the team. Marion Schedler and Isabel Boone evidenced remarkable improvement over last year. They will very probably be part of the foundation for a team next year. Gene Moe, Manager, and Constance Hamblen, Captain, won the picked doubles match. Miss Moe is playing her second successful year as a sophomore. Miss Hamblen has played four years on the team and her loss through graduation will be keenly felt next year.



ROW 1—Roy Stuart, James Rowles, Don Dirstine, Wayne Sunderlin, Gordon Galloway.  
ROW 2—Eric Anderson, Earl Turner, Gordon Hussard, Larry McDonnell. ROW 3—Clyde Doran,  
Mr. Livingston, Chet Paulson, Emil Anderson

## BOYS TENNIS



ROW 1—Jack Fuller, Don Jeffords, John Austin, David Davis, Charles Crowther. ROW 2—  
Jack Houston, Claude Pierson, Mr. Oke, Alan Portuguese, Wern Winston. ROW 3—Fred Gilbert,  
Arnold Barrons, Loyal Adkison, Carl Gill, John Davis

## BOYS GOLF





KNEELING—Winston Schleef, Earl Turner, Marshall Francis, Philip Dirstine. STANDING  
Golden Taylor, Bliss Moore, Don Frank, Bob Skindlov

## SENIOR A BASKETBALL



FIRST ROW—Charlotte Schaffer, Estelle James, Thelma Severin  
SECOND ROW—Marie Van De Vanter, Marie Allen

## SENIOR A VOLLEYBALL











9B





9A





9A





10B



10B



10A





10A





11B



11B



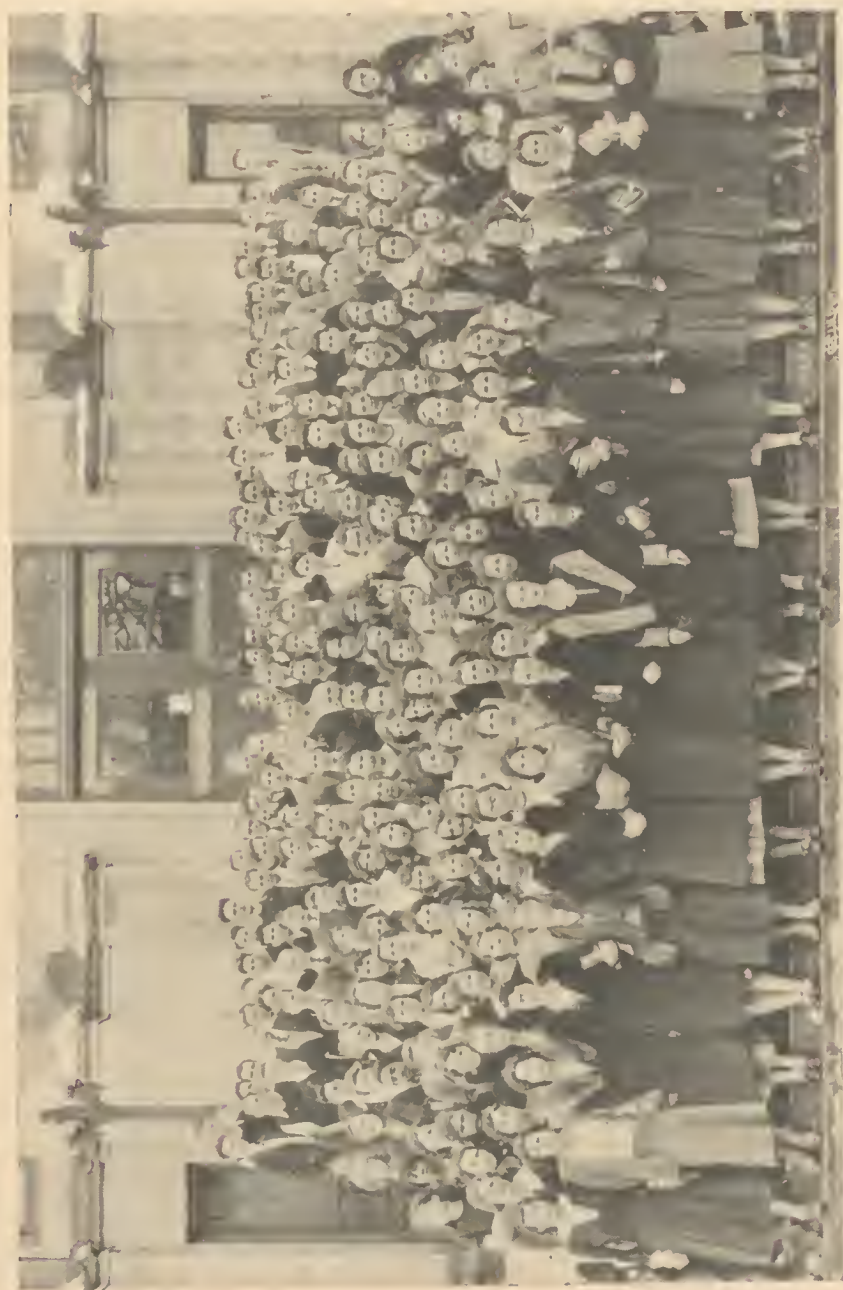
11A





11A





12B



12B



## SENIOR A SNAPS

ESTELLA  
JAMES

SHIRLEY  
MODESITT

HERBERT  
ARNOLD

ART  
COUTURE  
HARRY  
CASTINO

KENNETH  
CALLAHAN

SENNA  
GARCEA

JOHN  
KING

EVA  
BOLTON

CHARLOTTE  
SCHAEFFER





---

*Concentration, inspiration  
and application dampen-  
ed a little with perspiration  
will help you reach your des-  
tination.*

*—Coleman Cox*

*Best Wishes*  
and  
*Success*  
*to the January Class of*  
**1932**

# Smith Funeral Home

SMITH & COMPANY

1124 W. Riverside Ave.

Phone Main 2181



*Finman Business  
University.*

## AUTOGRAPHS

## HUMOR

David: "Pop, how soon will I be old enough to do as I please?"

Mr. Gnagey: "I don't know. Nobody has ever lived that long yet."

—:—

Mr. Orcutt to Miss Reely: "As you are in charge of the class play, you can give me a few free tickets."

"Yes," said Miss Reely; "and as you handle the school banking you can give me a few free bank-notes."

—:—

After a terrific struggle, Evelyn Stevens finally finished her examination paper, and then, at the end, wrote:

"Dear Miss Cassill: If you sell any of my answers to the funny papers, I expect you to split fifty-fifty with me."

—:—

Monte Barnes: "Yesterday I was in the company of the one I love most."

Mrs. Barnes (sweetly): "I'm surprised you don't get tired of being alone so much!"

—:—

Eddie Beggs, traveling alone, had a severe cold and kept up a continuous sniffing, which irritated an old lady across the aisle of the coach.

"Boy, haven't you a handkerchief?" finally asked the lady in desperation.

"Yes, but I never lend it to strangers," was Eddie's prompt answer.

## HUMOR

Miss Pettis was instructing her class in the use of antonyms.

"Now children," she said, "what is the opposite of the word 'sorrow'?"

"Happiness," shrieked the class in unison.

"What is the opposite of 'pleasure'?"

"Pain."

"And what is the opposite of 'woe'?"

"Giddap."

—:—

Mr. Clukey: "Richard, name three articles containing starch."

Richie Anderson: "Two cuffs and a collar."

—:—

A Chinese had a toothache and phoned a dentist for an appointment.

"Two-thirty all right?" asked the doctor.

"Yes," replied the Celestial; "tooth hurtin', all right. What time shall I come?"



## AUTOGRAPHS



*Fineman Business University*

*The New...*

## Plymouth

Floating Power  
Free Wheeling  
Easy-shift Transmission  
Double Drop Frame  
Hydraulic Brakes  
Safety Steel Bodies

See this new sensational car at

**Riegel Brothers**

*Dresses . . . Coats . . . Suits*

*Greenberg  
Style Shop*

*The House of Youth*

(Opposite Postoffice)

909 RIVERSIDE

Our Business is to  
Help You With Your



## Printing

*Newspapers  
Periodicals  
Posters*

**Western Newspaper  
Association**

326 ROOKERY BLDG.  
Phone Lakeview 1010

\$

\$

The Bank for Savings

Over 54,000  
Saving Depositors

Spokane  
Savings  
Bank

Capital . . . . One Million Dollars

\$

\$



---

HEARTY CONGRATULATIONS AND GOOD WISHES

for the Lewis and Clark

High School Graduates

## G. A. Pehrson, Architect

THE OLD NAT'L BANK BLDG.

---

## Saad & Son

*Shoe Repairing*

*510 Howard Street*

"I am very much disappointed in the way your son, Jack, talks," said Miss Collins. "Only today he said: 'I ain't never went nowhere.'"

Mr. Riegel: "He ain't, ain't he? Why, the young whelp's done traveled twicet as far as most kids his age."

---

S  
e  
r  
v  
i  
c  
e



CADILLAC  
L A S A L L E  
O A K L A N D  
P O N T I A C

P  
a  
r  
t  
s

## Thompson Cadillac Co.

Madison at Second Avenue

---

THE  
FRANKLIN PRESS

PRINTING RULING  
EMBOSSING BINDING

COLUMBIA BUILDING  
SPOKANE

Phone Main 3626

CHAS. POWER



## A Good Place

to Buy Your Diamonds

... A Good Place to Buy Your  
Jewelry

You can depend on a square deal at

**Sartori & Wolff**

Incorporated

*Makers of Fine Jewelry*

N. 10 WALL ST.

On the East Side of Wall Between  
Riverside and Sprague

## Illumination..

Efficient illumination is  
economical . . . it conserves  
eyesight and enables you to  
do more work without  
strain.

We shall be glad to ad-  
vise you.

The  
Washington Water  
Power Co.

## Specialists—

... Are Sure to Excel ...

We have 19 Specialists who perform  
*One Only* of the following services:

Permanent Waving, Manicuring,  
Haircutting, Water Waving

Continually doing one thing is what makes  
our operators proficient.

**Western Hair Co.**

2d Floor, Kuhn Bldg. Main 5161

---

Phone Main 2634

# O. C. Nail Agency

-- LIFE --  
INSURANCE  
SERVICE

*Spokane, Washington*

403 Old National Bank Building



*We extend congratulations to the  
Graduating Class and wish them  
continued success.*



## O. C. Nail Agency

Life Insurance Counsellors

403 Old National Bank Building

*Gladmin's*

9 So. Post Street

*Featuring smart clothes for the  
High School Miss . . .*

These garments are made of silk or  
wool . . . REASONABLY PRICED  
AND BEAUTIFULLY TAILORED



Leading the Nation in sales. See  
the new models.

*Good looking—good running*

**Used Cars**

AT YOUR PRICE

**Wells Chevrolet Co.**

First at Adams

ASK FOR

Red, White & Blue

or

**Victory  
Hard Wheat  
Flour**

**Spokane  
Flour Mills**

J & D PAINTS

*Glass*

*Mirrors*

Painters' Supplies

**Jones &  
Dillingham Co.**

SPOKANE, LEWISTON, GREAT FALLS



---

## Congratulations Graduates of January, '32

To you Graduates of January, '32, The Crescent extends its heartiest congratulations! You have successfully completed four years of study and are entering a new phase of your lives. We wish you success in your chosen endeavor.

Whether you enter the business world, the professional world, the home or go on to college, you will find us always ready to serve you.



THE CRESCENT

RIVERSIDE, MAIN AND WALL



*The Needed*

## Graduation Gift

*that never fails to please*

IN our Typewriter Department you can choose from all the Portables, Smith-Corona, Remington, Royal and Underwood, and if you desire at the special term price of \$5.00 cash; \$5.00 per month.

We rent, service and  
rebuild all  
makes

**Shaw & Borden Co.**  
STATIONERS • PRINTERS • ENGRAVERS •  
OFFICE • OUTFITTERS  
Spokane, Washington.

Use Our Convenient Street to Street Entrance  
325-327 Riverside . . . . 326-328 Sprague

We sell, and rent  
Home Typewriter  
Desks

54,000 Square Feet of Floor Space Devoted to Printing and Office Equipment Service for Your Needs

---

*Hearty Congratulations,  
Graduates*

We Are With You

**City Dye Works**

DRY CLEANING      EXPERT DYEING  
PRESSING      REPAIRING      RELINING

*Congratulations . GRADS*

*We are proud of you.*

Your foundation is laid. Keep on building in the future as you have in the past and your success is assured.

**Hart & Dilatush**

Professional Pharmacists

Main 2111      9 N. Stevens, Spokane

*"The Pharmacy with a Personality"*

O. M. MATTHEWS, Manager

School Letters,  
Caps, Pennants  
*and*  
Chenille Letters

Manufactured by

**Ware, Cochran  
& Coultas**

410 W. Sprague

Main 5233

Pioneer Characterizers

Costumers

**Miller-Dervant**

Wig and Toupee Makers

Beauty Parlors

209-211 N. Post Street

Main 6642

**BONDS**

Institutional

Municipal

Public Utility

Industrial

**Ferris & Hardgrove**

*"Knowledge Is Power"*

Congratulations to the  
Graduating Class of January, '32

**Burgan's**

Exclusive Apparel for  
Kiddies and the Junior Miss

Gotham Gold Stripe  
Silk Stockings

**OWEN**

Specialty Shop

824 Riverside Avenue  
Near Post Office

Compliments

of

**Mae Immel Jones, Inc.**

Davenport Hotel

*The Collegiate Shop*

---

*Congratulations  
Seniors*

—◆—  
May  
Your Future  
Bring Joy  
and Happiness  
—◆—

Peter M. Jacoy  
W. 402 Sprague Ave.

Students know  
Perfect Foods  
Should be Protected

—◆—  
**Hazelwood  
Butter** —◆—

Is Now Wrapped in  
...Cellophane...

TRANSPARENT, MOISTURE PROOF,  
DUST AND GERM PROOF

—◆—  
*"Hazelwood Keeps Fresh and Sweet  
Days Longer"*

---

CONGRATULATIONS

*and Best Wishes  
for Your Future*

GEORGE SILLMAN  
Proprietor-Manager

**The Parsons and The Sillman**

Spokane's Outstanding Residential Hotels

---

PERFECT WORK NEEDS  
PERFECT TOOLS . . .

*This is why RED BIRD TEA TOWELS are used by discriminating women  
everywhere. They dry dishes and polish glassware easily, quickly and  
without lint.*

FOR SALE IN STORES

**Spokane Toilet Supply Co.**

---



## Which Way?

Whatever road you choose for future travel, a business course at the Northwestern will prove valuable every day of your life.

IF YOU'RE AIMING AT COLLEGE—take a course in Shorthand—to speed the taking of complete class notes. Typing—for preparation of neater class work. Bookkeeping—to keep track of yourself financially. All three—to earn extra money.

IF THE BUSINESS WORLD BECKONS—the Northwestern offers you practical business training that has helped thousands of other high school graduates “make good.” Step in and ask for a catalog.

### Northwestern Business College

The Expert School

S317 Howard—Near Fourth

---

KEEP POSTED ON THE NEW BOOKS

Read the

## Latest Fiction

in our RENTAL LIBRARY at

3<sup>C</sup>  
Per Day

**John W. Graham & Co.**  
*If It's Made of Paper We Have It.*

707-711 Sprague Ave.

708-716 First Ave

---



---

## We Thank the Seniors....

for their patronage and congratulate  
them upon their achievements and  
wish every measure of success to all.

## Nu-Art Studio

WE WELCOME THE CHANCE TO SERVE YOU AGAIN

MAIN 3714

621 JAMIESON BLDG.

SPOKANE

---

## Idaho Grocery & Market

We carry a full line of

Fresh Fruits, Vegetables, Fancy Groceries and Meats

OUR PRICES ARE RIGHT . . . OUR QUALITY THE BEST

Our one aim is to please our customers. . . . We deliver.

Phone Main 1694

207 Riverside

Spokane, Wash.

---

A

Complete Laundry

and

Dry Cleaning

Service



**Ideal Laundry  
Co.**

*Ideal Dry Cleaners*

Brdwy. 1200

## Wraight's Store

5c to \$1.00 and Up

*Youthful Frocks*

and

*Sports Apparel*

*For School Wear*



MILLINERY

PETER'S SHOES



Buy Here and Save All Ways

Shop Here Before

. . . You Buy . . .

---

---

Baggage Department Open  
Day and Night

Phone Riv. 2111

## Pacific Transfer Co.

East 103 Sprague

MOVING... PACKING... SHIPPING... STORAGE

---

TO THE FUTURE BUSINESS MEN AND WOMEN OF SPOKANE . . . .

SUCCESS . . . and let us help with The Best of Printing

## Cole Printing Co.

PRODUCERS OF ATTRACTIVE PRINTING

Rubber Stamps, Seals, Stencils, Etc.

Main 1014

Spokane, Wash.

---

## Roundup Brand

Consistently Better } **for your Table** { Consistently Better  
Canned Foods } Canned Foods

Look for the *BLUE* and *WHITE* Label

*"The Emblem of Purity"*

---

Phone Main 6878

## Lubin's Sample Store

POPULAR PRICED

Cloaks, Suits, Dresses, Furs, Millinery

110-114 NORTH POST STREET

SPOKANE, WASHINGTON

---

---

# Congratulations

To the January  
Graduating Class



Broadview Dairy  
Co.

Milk — Cream — Ice Cream



Classics in

## Photography

CHRONICLE BUILDING

Telephone Main 5572

### Something to Write Home About!

... and so, dear, you get something back on this month's allowance. I've had *grand* success in shopping ... at Penney's. Just glimpse these recent 'buys' and see if I haven't learned a thing or two about THRIFT:

A Darling Frock .....	\$4.98
Whispy Hose .....	.79
Walking Shoes .....	3.98
Lounging Pajamas .....	1.98

"And every item *better* than I've ever had for much more!

Lovingly  
Anne

—◆—  
**J. C. Penney**  
Company, Inc.

### CONGRATULATIONS

*to the Senior Class and every  
wish for success.*

**Whitlock's**  
**Prescription Pharmacy**  
(Incorporated)

Phones: Main 2294, Main 2295  
427 Riverside Ave. Paulsen Bldg.

### Very Best Wishes

*But Remember*

Your education is incomplete without  
musical training.

—◆—  
**Hollenback Piano Co.**

167 S. Howard      Riverside 0841

### Cascade Laundry Co.

Dry Cleaning

HAT AND RUG  
CLEANING

Glenwood 1122

### Bradford Clothes Shop

*New Low  
Prices on  
Clothes of  
Character*

N. E. Corner Wall at Sprague



---

# Congratulations—



January Grad-  
uation Class.  
May you, like  
the knights of  
old . . . allow  
nothing to stop  
your progress  
in your life  
work.

## Sprague Engraving Co.

Stock Exchange Building

Phone Main 6066

*Didn't we  
have fun on  
gummed stuff Kay?  
Lots of luck to  
a very pretty girl.  
& enjoy yourself*

*What a great  
day! What a great  
day! Sincerely,  
Vivian Boyd*

For the Best in

# Hardware

Fine Tools—Athletic Goods—Paints

Builders Hardware—Mill Supplies

## Holley-Mason Hardware Co.

DIVISION OF MARSHALL-WELLS CO.

*For a still 20  
years gum  
from side*



Back to the Prices  
of 15 Years Ago

ASK DAD

Garrett, Stuart  
& Sommer

The eminent chefs of the High  
Schools here,  
Are familiar with meats, for the  
kiddies they cheer  
Take Lewis & Clark and North Cen-  
tral, too,  
And Havermale Junior, they also  
come through,  
With athletes husky, and girlies so  
fair,  
Eating Blue Ribbon Meats, selected  
with care.

Welch's  
Markets

710 Main Avenue



An Ideal Place to Enjoy . . .

A Big Malted Milk . . . . . 15c

Private Rooms for Parties and Dances

DESSERT HOTEL  
COFFEE SHOP - FOUNTAIN



